



# SHOWCASE LUXURY

WATCHES & JEWELLERY

Step inside a land of luxury and craft your own style identity with our showcase collection of quality-first, fashion-forward brands. From the effortless charisma of Bernhard H. Mayer® watches and jewellery, to the gorgeous femininity of both the Leya and Brook & Blaze collections, to the precision timekeeping of CIMIER timepieces. Our showcase of luxury Watches & Jewellery brands has something for everyone to curate their own unique expression of personal style.



# SHOWCASE CONTENTS

04

Bernhard H. Mayer®

07

TIMEPIECES by Bernhard H. Mayer®

28

JEWELLERY by Bernhard H. Mayer®

46

CIMIER

50

Leya

56

Brook & Blaze



BERNHARD H. MAYER  
DEPUIS 1871

# CRAFTING QUALITY & STYLE SINCE 1871

Bernhard H. Mayer® has been a beacon of superior craftsmanship and quality since 1871, devising pieces that are as innovative as they are rooted in a tradition of excellence.

For more than a century-and-a-half, the Bernhard H. Mayer® brand has continued to evolve both its product offerings and its designs, without ever stepping away from its foundation as an atelier of master craftsmanship with an unwavering commitment to quality.

Made for the self-assured go-getters of the world, all Swiss-made timepieces and every jewellery collection from the House of Mayer are designed to champion active lifestyles that are full of curiosity, awe, adventure, passion, and accomplishment.

Effortless, understated, and underpinned by the quiet confidence that comes from knowing one's worth, today's Bernhard H. Mayer® designs range from classics to cool; from every-day staples that complement any and every outfit, to the statement-making pieces that personify the unique personality of the wearer.

The Mayer brand creates modern heirlooms inspired by contemporary, modern design trends, while also reinterpreting classic styles that defy fast-fashion phases. **This means that when you accessorise with Bernhard H. Mayer®, you will always be the most interesting person in the room.**

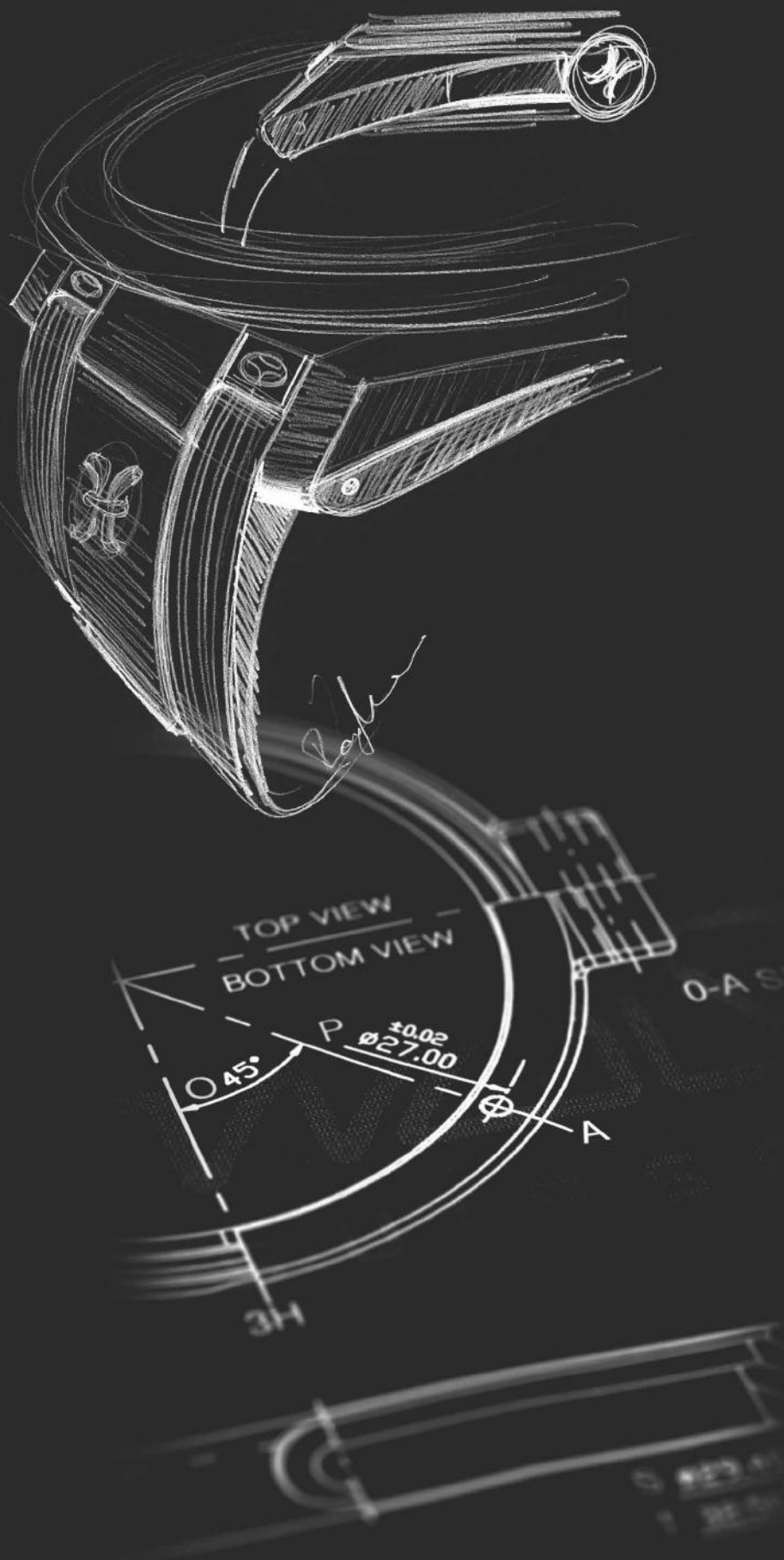
# THE FUTURE OF FASHION

As a luxury brand on the international stage, a source of uncompromising commitment for Bernhard H. Mayer® is to become a truly sustainable creator of luxury pieces. We're doing this by employing manufacturing methods that incorporate eco-considerate innovations and recycled materials, and by injecting a 'sustainability mentality' into our entire product design ethos.

Bernhard H. Mayer® recently debut its first collection of sustainable watches made from recycled materials. Meanwhile, the vast majority of all gold in our jewellery collections is sourced from members of the Responsible Jewellery Council (RJC), allowing us to utilise recycled gold in our luxury jewellery designs. We also use eco-friendly packaging wherever possible.

## Same superior craftsmanship.

When purchasing jewellery made with recycled gold or wearing watches made from recycled materials, there is no compromise on quality. The only difference is that you are reducing your impact on the environment with sustainable fashion that looks and feels no different from accessories made from 'new' materials.





## TIMEPIECES by Bernhard H. Mayer®

Welcome to the world of watches by Bernhard H. Mayer®, where each timepiece, be it a classic or contemporary piece, is a testimony to the attention-to-detail, the precision, and the exemplary craftsmanship for which the brand has come to be known.

From stylish wrist companions for everyday wear, to iconic timepieces reserved for life's momentous occasions, Bernhard H. Mayer® watches accompany their wearer through every adventure of life.

Our watch atelier and showroom is in Switzerland – the world's watch hub – and all Bernhard H. Mayer® timepieces adhere to the strict criteria of quality watches that bear the coveted 'Swiss Made' mark.



# BERNHARD H. MAYER® 150<sup>TH</sup> ANNIVERSARY COLLECTION

An ode to the Mayer brand's rich history, the 150<sup>th</sup> Anniversary dedicatory watch features a special commemorative coin on the watch face displaying the original pre-war Mayer factory in Pforzheim, and a see-through caseback showcasing a special 150<sup>th</sup> Anniversary logo on the rotor.



Stainless steel 316L case | Black croco-print leather strap | Blue dial with 150<sup>th</sup> Anniversary silver 925/- medal and silver-applied indexes | Hour, minute, second function | Swiss Automatic movement | 43 mm diameter | Limited edition 1,871 pieces



BERNHARD H. MAYER  
DEPUIS 1871



QNET

## QNET 25<sup>TH</sup> ANNIVERSARY LIMITED-EDITION TIMEPIECE

Introducing the QNET 25<sup>th</sup> Anniversary limited-edition timepiece – a tribute to a remarkable journey and an homage to a quarter century of success. This living history is captured in cool cobalt blue with interchangeable straps and a limited release of only 1998 pieces as a nod to the year of QNET's inception.



Stainless steel 316L case and bracelet | Folding clasp buckle | Additional interchangeable blue rubber strap with folding clasp buckle | Cobalt blue sunray brushed dial with raised Roman numeral detail and white Super-LumiNova indexes | Sapphire crystal with anti-reflective coating | Sapphire crystal caseback with screws and engraved serial number | Hour, minute, second, date function | 10 ATM | Swiss Automatic movement - refined Sellita SW 200 full-rhodium plated, oscillating weight decorated with côtes de Genève and blue engraved "QNET 25 Anniversary" and "Bernhard H. Mayer®", circular grained bridges with snailed bevels and undercuts, blue screws | 44 mm diameter | Limited Edition 1,998 pieces | Swiss Made



# BERNHARD H. MAYER®

## THE OMNI COLLECTION

For those who refuse to choose between style and substance, The OMNI Collection is a gorgeous range of fashionable timepieces with a sustainable mindset. Taking its name from the Latin *OMNI* meaning *ALL*, this is a collection of eco-friendly fashion for those who want to look good and to look out for the environment. Made from certified recycled TPU plastic and stainless steel, The OMNI Collection is where **fashionable** meets **sustainable**, without any compromise to quality.



### OMNI OCEAN STAINLESS STEEL

Recycled stainless steel case and bracelet | Recycled stainless steel butterfly buckle | Recycled deep blue sunray brushed gradient dial with white Super-LumiNova indexes | Sapphire crystal with anti-reflective coating | Hour, minute, small second | 5 ATM | Swiss Quartz Ronda movement | 42 mm diameter | Swiss Made



### OMNI GREEN STAINLESS STEEL

Recycled stainless steel case and bracelet | Recycled stainless steel butterfly buckle | Recycled deep green sunray brushed gradient dial with white Super-LumiNova indexes | Sapphire crystal with anti-reflective coating | Hour, minute, small second | 5 ATM | Swiss Quartz Ronda movement | 42 mm diameter | Swiss Made

## OMNI MINT STAINLESS STEEL

Recycled stainless steel case and bracelet | Recycled stainless steel butterfly buckle | Recycled pastel green sunray brushed gradient dial with white Super-LumiNova indexes | Sapphire crystal with anti-reflective coating | Hour, minute, small second | 5 ATM | Swiss Quartz Ronda movement | 36 mm diameter | Swiss Made





## OMNI MIDNITE

Recycled stainless steel case | Recycled black TPU strap | Recycled stainless steel tongue buckle | Recycled black anthracite sunray brushed gradient dial with white Super-LumiNova indexes | Sapphire crystal with anti-reflective coating | Hour, minute, small second | 5 ATM | Swiss Quartz Ronda movement | 42 mm diameter | Swiss Made



## OMNI SKY

Recycled stainless steel case |  
Recycled pastel blue TPU strap |  
Recycled stainless steel tongue  
buckle | Recycled pastel blue  
sunray brushed gradient dial  
with white Super-LumiNova  
indexes | Sapphire crystal with  
anti-reflective coating | Hour,  
minute, small second | 5 ATM |  
Swiss Quartz Ronda movement |  
36 mm diameter | Swiss Made



## OMNI BLOOM

Recycled stainless steel case |  
Recycled pastel pink TPU strap |  
Recycled stainless steel tongue  
buckle | Recycled pastel pink  
sunray brushed gradient dial  
with white Super-LumiNova  
indexes | Sapphire crystal with  
anti-reflective coating | Hour,  
minute, small second | 5 ATM |  
Swiss Quartz Ronda movement |  
36 mm diameter | Swiss Made



## OMNI MINT

Recycled stainless steel case |  
Recycled pastel green TPU strap |  
Recycled stainless steel tongue  
buckle | Recycled pastel green  
sunray brushed gradient dial  
with white Super-LumiNova  
indexes | Sapphire crystal with  
anti-reflective coating | Hour,  
minute, small second | 5 ATM |  
Swiss Quartz Ronda movement |  
36 mm diameter | Swiss Made

# BERNHARD H. MAYER®

## EMPIRE COLLECTION

Crafted with precision engineering and powered by a self-winding Swiss automatic movement, the Empire Collection embodies Bernhard H. Mayer®'s enduring tradition of excellence and innovation.



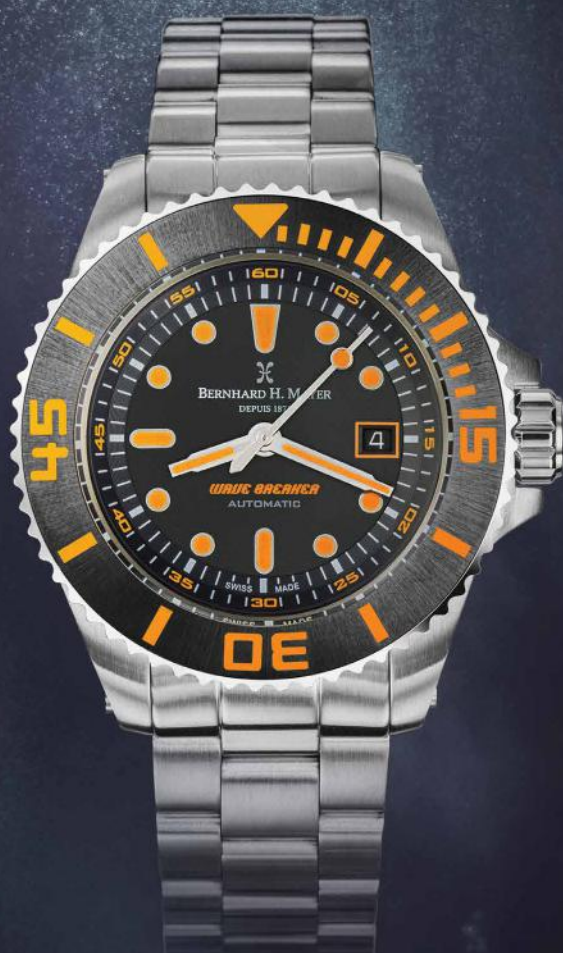
### EMPIRE PORTUS ROSE GOLD

Stainless steel 316L case with rose gold PVD plating | Black rubber strap | Folding clasp buckle | Swiss Automatic movement – full rhodium-plated, oscillating weight, decorated with côtes de Genève, circular grained bridges with snail bevels and undercuts, and bluescrews | 44 mm diameter | Limited edition 4,999 pieces



### EMPIRE CLARA ROSE GOLD

Stainless steel 316L case with rose gold PVD plating | White rubber strap | Folding clasp buckle | Swiss Automatic movement – full rhodium-plated, oscillating weight, decorated with côtes de Genève, circular grained bridges with snail bevels and undercuts, and bluescrews | 34 mm diameter | Limited edition 4,999 pieces



## BERNHARD H. MAYER® WAVE BREAKER COLLECTION

Perfectly paired with a wet suit or a business suit, the Wave Breaker Collection accommodates an active and busy lifestyle, in and out of the office. The collection features a luminous deep-water timer function, a defensive helium valve, and all-round protection from the rigorous demands of deep-sea diving.

### WAVE BREAKER

Stainless steel 316L case and bracelet |  
Additional interchangeable black rubber strap |  
Orange Super-LumiNova indexes | Helium valve |  
200 ATM | Swiss Automatic movement |  
47 mm diameter | Limited edition 2,999 pieces



BERNHARD H. MAYER®  
POWERMASER SERIES  
COLLECTION

Inspired by industrial and contemporary design, the PowerMaster Series Collection complements active and success-driven performers with sophisticated and authoritative confidence. These watches are a wearable trophy to mark your aspirations and achievements, whilst keeping to the essentials of timekeeping.



## POWERMATER ROSE GOLD-GREEN

Stainless steel 316L case with rose gold PVD plating | Green rubber strap | Deployment buckle | Green ceramic turning bezel | Swiss Automatic movement | 44 mm diameter | Limited edition 4,999 pieces



## POWERMATER BLUE

Stainless steel 316L case | Blue rubber strap | Deployment buckle | Blue ceramic turning bezel | Swiss Automatic movement | 44 mm diameter | Limited edition 4,999 pieces



## POWERMATER CHRONOGRAPH

Stainless steel 316L case | Black rubber strap | Deployment buckle | Black turning bezel | Swiss Quartz movement | 44 mm diameter

# BERNHARD H. MAYER® LE CLASSIQUE COLLECTION

Featuring smooth, minimalist designs and technical perfection, the Le Classique Collection is a statement of maturity and personal achievement, and one that will never go out of style.



## LE CLASSIQUE STAINLESS STEEL

Stainless steel 316L case and bracelet |  
Folding clasp buckle | Swiss Quartz movement |  
42 mm diameter



## LE CLASSIQUE LADIES STAINLESS STEEL

Stainless steel 316L case and bracelet |  
Folding clasp buckle | Swiss Quartz movement |  
35 mm diameter





## LE CLASSIQUE ROSEA DIAMOND

Stainless steel case with gold PVD plating |  
Purple calf leather strap | Tongue buckle |  
60 brilliant-cut diamonds, total 0.24 ct |  
Purple Mother of Pearl dial | Swiss Quartz  
movement | 35 mm diameter



## LE CLASSIQUE CHRONOGRAPH ROSE GOLD

Stainless steel 316L case with rose gold  
PVD plating | Blue rubber strap | Deployment  
buckle | Chronograph function | Swiss Quartz  
movement | 42 mm diameter

## LE CLASSIQUE LADIES GOLD

Stainless steel 316L case with gold  
PVD plating | Black rubber strap |  
Tongue buckle | Swiss Quartz movement |  
35 mm diameter



## LE CLASSIQUE

Stainless steel 316L case | Black rubber  
strap | Tongue buckle | Swiss Quartz  
movement | 42 mm diameter



# BERNHARD H. MAYER® CLASSICS COLLECTION

With options for the sophisticated man and woman, the elegance and classic style of the Bernhard H. Mayer® Classics range never goes out of date and will never age.



## MECANIQUE

Stainless steel 316L case | Black croco-print leather strap | Folding clasp buckle | Grey sunray dial with yellow gold indexes | Sapphire crystal with anti-reflective coating | See-through caseback | Hour, minute, small second function | 5 ATM | Swiss Mechanic movement with yellow gold plating and circular graining | 44 mm diameter | Limited edition 1,999 pieces



## MECANIQUE DIAMOND

Stainless steel 316L case | Purple croco-print leather strap | Folding clasp buckle | Full-cut diamonds, total 0.32 ct | Hour, minute, small second function | Swiss Mechanical movement | 44 mm diameter | Limited edition 999 pieces

# BERNHARD H. MAYER® FASHION COLLECTION

Fashion-forward fashionistas are always ahead of the curve when it comes to the latest trends, and the Bernhard H. Mayer® Fashion range of both masculine and feminine wristwear affords them the perfect timepiece to complement their contemporary style.



## DRIFT RACER

Stainless steel 316L case | Black rubber strap |  
Folding clasp buckle | Small second function |  
Swiss Quartz movement | 44 mm diameter



## LURVE DIAMOND

Stainless steel 316L case and bracelet with rose gold PVD plating |  
12 diamonds, total 0.11 ct | Sunray brushed in silver colour dial |  
Swiss Quartz movement | 30 mm diameter

## LURVE

Stainless steel 316L case with rose gold PVD plating |  
Vegan leather strap | Rose gold PVD-plated folding clasp  
buckle | Champagne sunray dial | Swiss Quartz movement |  
30 mm diameter





# JEWELLERY by Bernhard H. Mayer®

From the simple to the statement-making, all Bernhard H. Mayer® jewellery pieces exude an aura of individual expression. With unique styles, exquisite designs, and impeccable quality of gemstones and precious metals, to own Bernhard H. Mayer® jewellery is to forever own a piece of veritable style.

With carefully curated collections of jewellery featuring both day-to-day and stand-out pieces, the effortless style inherent in Bernhard H. Mayer® jewellery ensures each piece is cherished for generations to come.



## BERNHARD H. MAYER® EMBRACELETS

Embrace life's moments and capture each milestone with your own collection of Embracelets – story-telling bracelets that pay tribute to the special moments illustrating the ever-unfolding story of your life. Mix-and-match them to truly embrace the diversity that is *you*.



## EMBRACELET PINK AMETHYST

18K yellow gold | 5.8 g | 0.14 ct diamonds, H/SI |  
Pink Amethyst 6x4 mm (9 pcs)



## EMBRACELET DIAMOND

18K white gold | 4.7 g | 0.22 ct diamonds, H/SI



## EMBRACELET SWISS BLUE TOPAZ

18K white gold | 4.7 g | 0.26 ct diamonds, H/SI |  
Swiss Blue Topaz 5x3 mm (1 pc)



## EMBRACELET AMETHYST

18K yellow gold | 6.3 g | 0.07 ct diamonds, H/SI |  
Amethyst 6x4 mm (4 pc) | Amethyst 6x6 mm (1 pc) |  
White Topaz 6x4 mm (4 pc) | White Topaz 6x6 mm (1 pc)



**MOON GLORY EARRINGS**

18K yellow gold | 1.0 g | Akoya Pearl, White/Silver and White/Rose, 7.5-8 mm

**MOON GLORY PENDANT**

18K yellow gold | 0.4 g | Akoya Pearl, White/Silver and White/Rose, 8.5-9 mm | 6 brilliant-cut diamonds, 0.04 ct, G/SI | Complimentary yellow gold-plated chain

**BERNHARD H. MAYER®**  
**PEARL ICONS COLLECTION**

Minimalistic designs that highlight the regal elegance of the 'gem of the sea', the Pearl.



## GRETA NECKLACE

18K yellow gold | 2.7 g | 45 cm sliding, lobster clasp | Akoya Pearl, White, 8-8.5 mm (5 pcs), 5-5.5 mm (1 pc)

## GRETA RING

18K yellow gold | 1.9 g | Akoya Pearl, White, 7.5-8 mm

## GRETA BRACELET

18K yellow gold | 2.1 g | 2 rows, flexible | Akoya Pearl, White/Silver and White/Rose, 8.5-9 mm





## DIANA NECKLACE

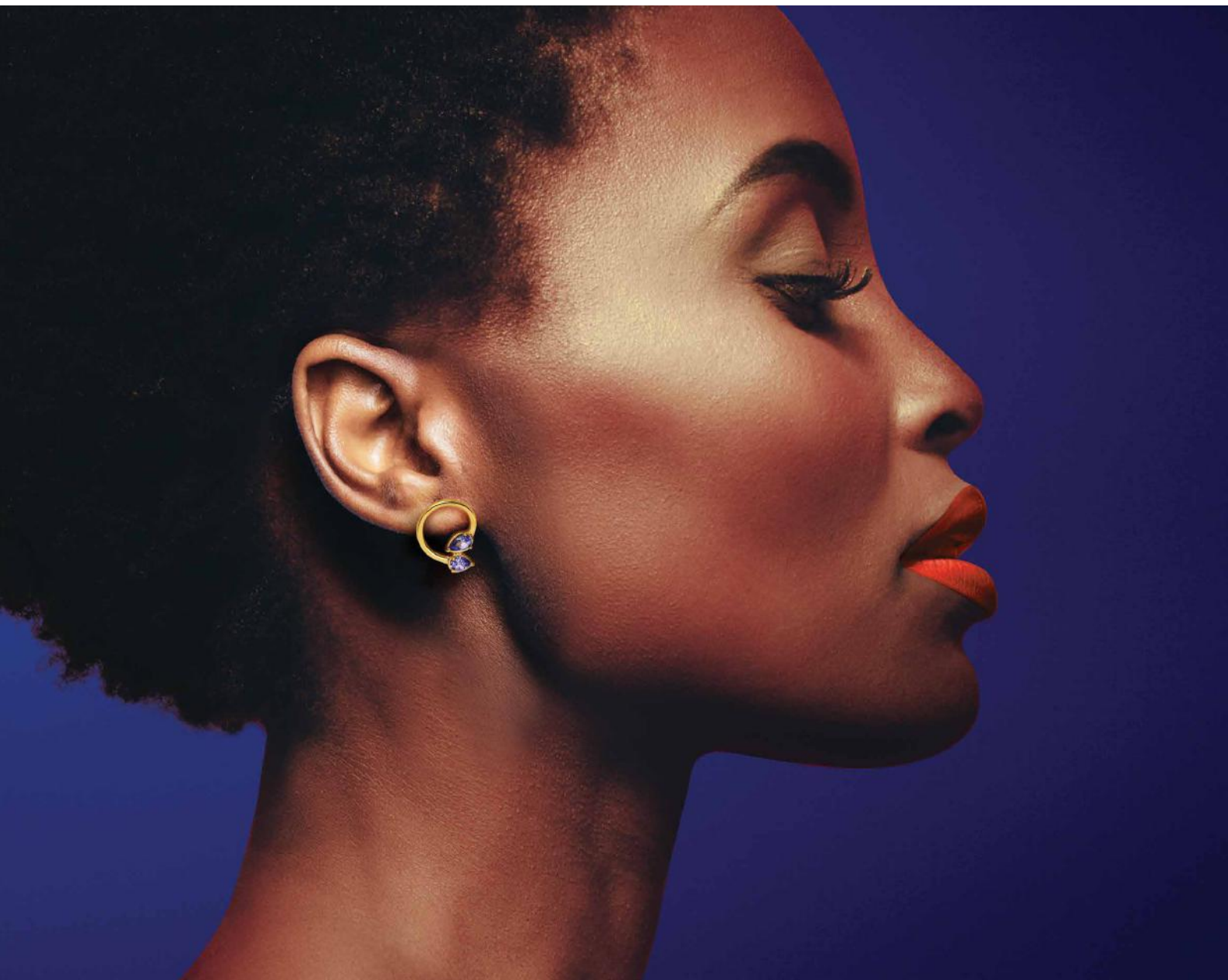
18K yellow gold | 2.7 g | 40+5 cm chain | Akoya Pearl, 8.5-9 mm |  
23 brilliant-cut diamonds, 0.09ct, W/SI



## SELENA PEARL SET

**Necklace:** 18K yellow gold, 2.5 g, 45 cm sliding chain | Akoya Pearl, 3 detachable centre pearls, 6-8.5 mm  
**Earrings:** 18K yellow gold | 0.7 g | 8 cm including pearl | Akoya Pearl, 7.5-8 mm





BERNHARD H. MAYER®  
TIMELESS TANZANITE  
COLLECTION

Our tribute to the exceptionally rare and uniquely beautiful African treasure, the vibrant Tanzanite, so rare that it is only found nestled deep in the foothills of Mount Kilimanjaro.



### BLUE BREEZE PENDANT

18K yellow gold | 4.1 g | 0.49 ct Tanzanite, AAAA | 0.01 ct diamonds, H/SI | 18K yellow gold chain

### BLISS HOOP EARRINGS

18K yellow gold | 4.1 g | 0.25 ct Tanzanite, AAAA



### BLUE DROP PENDANT

18K yellow gold | 2.3 g | 0.64 ct Tanzanite, AAAA | Pear 6x4 mm, 1 piece / Pear 5x3 mm, 1 piece | \*Chain is not included

### BLUE DROP EARRINGS

18K yellow gold | 2.9 g | 0.71 ct Tanzanite, AAAA | Pear 5x3 mm, 2 pieces / Pear 4x3 mm, 2 pieces



BERNHARD H. MAYER®  
IMAN  
COLLECTION

A collection of faith-affirming symbols of devotion to Islam that showcase intricately engaging designs for those who wear their faith for all to witness.

**AMANI PENDANT**

18K yellow gold | 2.9 g | 0.21 ct diamonds, H/SI |

\*Chain is not included.

# BERNHARD H. MAYER® CLASSICS COLLECTION

A collection of delicate and timeless pieces that exude luxury, surviving time and trends to provide eternal elegance.



## AMITY STAR SET

**Pendant:** 18K yellow gold / part rhodium plating | 1.3 g | 0.03 ct diamonds, H/SI | \*Chain is not included

**Earrings:** 18K yellow gold / part rhodium plating | 2.1 g | Ear studs with pins and premium butterfly backs | 0.03 ct diamonds, H/SI



## AUTUMN EARRINGS

**Pendant:** 18K yellow gold / part rhodium plating | 2.1 g | 0.09 ct diamonds, H/SI | \*Chain is not included

**Earrings:** 18K yellow gold / part rhodium plating | 3.3 g | Drop earrings with pins and premium butterfly backs | 0.08 ct diamonds, H/SI



## BERNHARD H. MAYER® CLASSE BANGLE L

18K yellow gold inlay with matt finish / Stainless steel with matt finish | 18K gold, 2.3 g | Weight: 19 g | Dimensions: 67 x 51.3 mm

## BERNHARD H. MAYER® CLASSE BANGLE XL

18K yellow gold inlay with matt finish / Stainless steel with matt finish | 18K gold, 2.4 g | Weight: 20 g | Dimensions: 70 x 53 mm



### FREYA PENDANT

18K white gold | 4.4 g |  
1.00 ct diamonds, H/SI |  
18K white gold chain



### ADONIA DIAMOND PENDANT

18K yellow gold | 1.7 g |  
0.25 ct diamonds, H/SI |  
18K yellow gold chain



### UNITY DIAMOND PENDANT

18K white gold | 1.0 g |  
0.10 ct diamond, H/SI |  
Complimentary  
rhodium-plated chain



### THEIA SET

**Pendant:** 18K yellow gold |  
1.2 g | 0.16 ct diamonds,  
H/SI | Complimentary  
yellow gold-plated chain

**Earrings:** 18K yellow gold |  
1.6 g | 0.16 ct  
diamonds, H/SI

# BERNHARD H. MAYER®

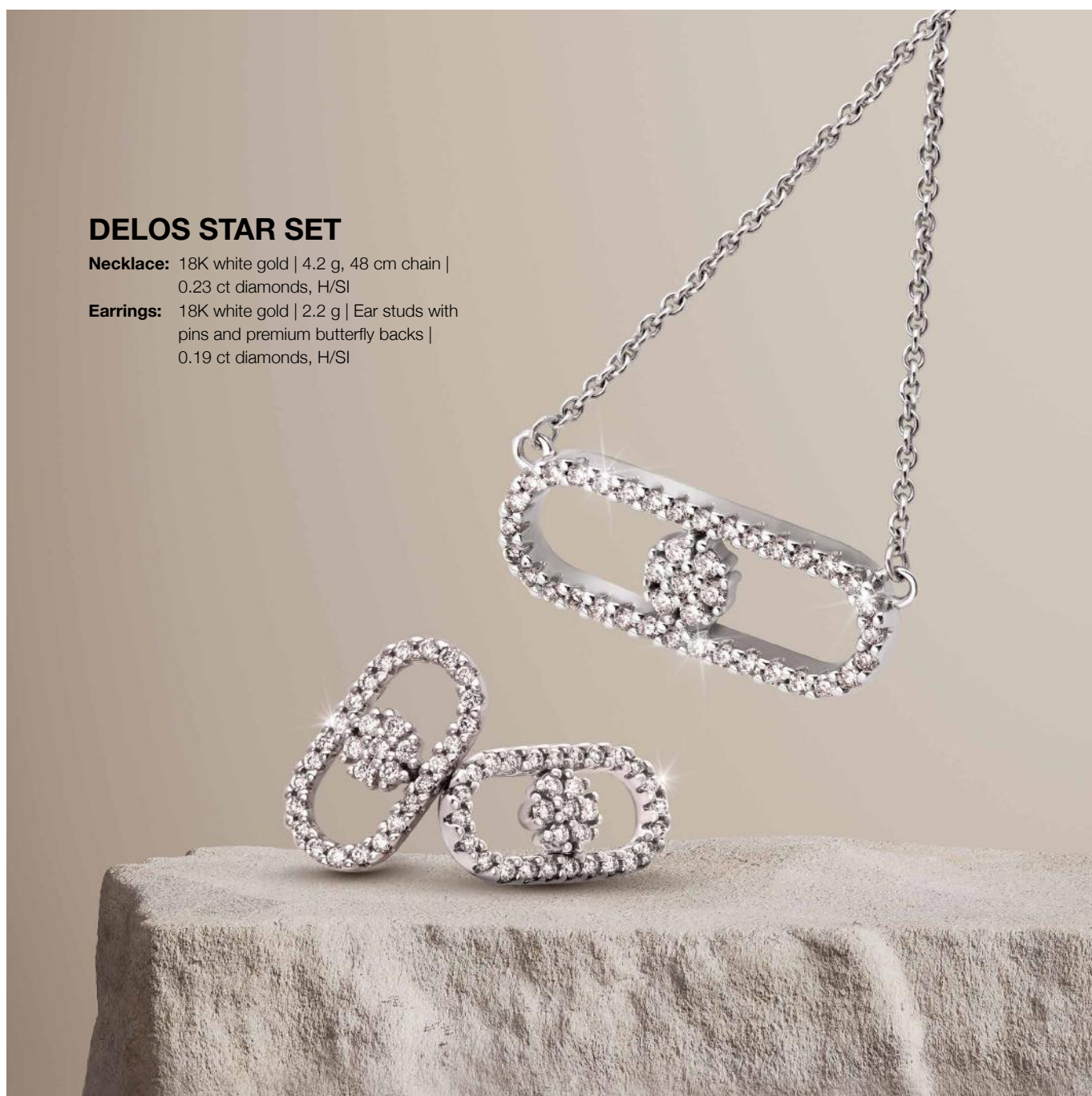
## ELEMENTAL COLLECTION

Exquisite pieces that epitomise modernity, creativity, and quality, taking inspiration from the elements, the changing of the seasons, and the bountiful nature that surrounds us.

### DELOS STAR SET

**Necklace:** 18K white gold | 4.2 g, 48 cm chain |  
0.23 ct diamonds, H/SI

**Earrings:** 18K white gold | 2.2 g | Ear studs with  
pins and premium butterfly backs |  
0.19 ct diamonds, H/SI





### **KHALIDA ETERNITY PENDANT**

18K yellow gold | 3.5 g |  
0.25 ct diamonds, H/SI |  
18K yellow gold chain



### **DOUBLE LEAF DIAMOND PENDANT**

18K yellow gold / part  
rhodium plating | 2.4 g |  
0.03 ct diamonds,  
H/SI | Complimentary  
gold-plated chain



### **GOLDEN COVE DIAMOND PENDANT**

18K yellow & white gold |  
2.8 g | 0.05 ct diamonds,  
H/SI | Complimentary  
gold-plated chain



## MIRA STAR SET

**Pendant:** 18K white gold | 1.9 g | 0.24 ct diamonds, H/SI | \*Chain is not included

**Earrings:** 18K white gold | 3.0 g | Ear studs with pins and premium butterfly backs | 0.25 ct diamonds, H/SI



## DELOS SET

**Pendant:** 18K white gold | 1.0 g |  
0.03 ct diamonds, H/SI |  
\*Chain is not included

**Earrings:** 18K white gold | 1.9 g |  
Ear studs with pins and  
premium butterfly backs |  
0.03 ct diamonds, H/SI



## SUN & EARTH DIAMOND PENDANT

18K yellow & white gold | 2.1 g |  
0.09 ct diamonds, H/SI |  
Complimentary rhodium-plated chain



## JAZZY BLUE TOPAZ DIAMOND PENDANT

18K white gold | 3.9 g | 4.0 ct sky-blue  
topaz | 0.06 ct diamonds, H/ SI |  
18K white gold chain



## ECLIPSE PENDANT

18K yellow and white gold | 1.5 g |  
0.03 ct diamonds, H/SI |  
\*Chain is not included



## GLIMMER PENDANT

18K yellow gold | 1.4 g | 0.19 ct  
diamonds, H/SI | 18K yellow gold chain



## AMORE TWIN PENDANT

18K yellow gold | 1.0 g | 0.03 ct  
diamonds, H/SI | Complimentary  
yellow gold-plated chain



## CLARA PENDANT

18K yellow gold | 1.8 g | 0.02 ct diamonds,  
H/SI | Complimentary yellow gold-plated  
chain



## ELENA PENDANT

18K yellow gold | 6.5 g | 0.50 ct  
diamonds, H/SI | 18K yellow gold chain



## EMMA INFINITE PENDANT

18K yellow gold | 2.1 g | 0.10 ct  
diamonds, H/SI | Complimentary  
yellow gold-plated chain





Since 1924, the CIMIER team has established a reputation for aesthetic efficiency, a benchmark among watch enthusiasts. CIMIER watches reflect the elemental values of the Swiss watchmaking tradition – sophistication, style, accuracy, and a keen attention to the balance of form and function.

With QNET being the Official Direct Selling Partner of Manchester City, CIMIER's creation of the QNETCity watch to withstand the most active of lifestyles was a natural choice for Manchester City FC, and is a partnership built to win.

Bold, stylish, and equipped with high-performance capacity, CIMIER's QNETCity Collection is a strong partnership of greatness.

Each watch is emblazoned with the iconic obsidian blue emblem of Manchester City Football Club, and engraved with your unique serial number and the stamp of 'Official Product Manchester City FC' label on the caseback.

A recognisable and respectable wrist statement with a global name you can wear with pride, the QNETCity Collection is the perfect match for the gentleman with a love of the game, both on and off the field.



## QNETCITY AUTOMATIC STEEL

Stainless steel 316L case | Black rubber strap |  
Deployment buckle | Official Licensed Product  
Manchester City FC | Hand, minute, second,  
date function | Swiss Automatic movement |  
46 mm diameter | Limited edition 1,894 pieces



# CIMIER

SWISS WATCHES



**QNET**

OFFICIAL DIRECT SELLING PARTNER

## TOGETHER WE RISE

A PARTNERSHIP BUILT TO WIN



### QNETCITY BLACK

Stainless steel 316L case with black PVD plating | Black rubber strap | Deployment buckle | Official Licensed Product Manchester City FC | Hand, minute, second, date function | Swiss Quartz movement | 42 mm diameter



### QNETCITY GOLD

Stainless steel 316L case with gold PVD plating | Black rubber strap | Deployment buckle | Official Licensed Product Manchester City FC | Hand, minute, second, date function | Swiss Quartz movement | 42 mm diameter



### QNETCITY

Stainless steel 316L case | Black rubber strap | Deployment buckle | Official Licensed Product Manchester City FC | Hand, minute, second, date function | Swiss Quartz movement | 42 mm diameter



Bearing the bold and carefree spirit of a true world traveller,  
Leya showcases a select range of feminine jewellery that radiates with  
unique culture and class. Wherever you may find yourself next, there's a  
Leya out there to accompany you on your journey towards your passion  
and purpose.

Adorn yourself with Leya,  
and you'll be in a class of your own.





## ROSE GOLD FLEUR SET

Perfectly crafted for women who embrace their femininity, this set highlights the beauty and sophistication of the modern lady. The delicately placed diamonds on the intricate earrings give this pair a noticeable panache. Meanwhile, the matching rose gold pendant is embroidered with diamonds on each flower petal, making it fit for not only the contemporary woman but also the traditional.

**Pendant:** 14K rose gold | 1.5 g | 0.01 ct diamonds, G/SI2, round brilliant 57 cut

**Earrings:** 14K rose gold | 3.3 g | 0.03 ct diamonds, F/VVS2, single 17 cut





## YELLOW GOLD DIVA SET

Glam up and show up with this pendant and earring set deserving of a diva. The bold and thick diamond strokes capture the wearer's zest for life, epitomising a risk-taker who seeks the challenge beyond their comfort zone. Meanwhile, looping curves add a feminine softness to those who adorn them.

**Pendant:** 14K yellow gold | 1.5 g | 0.03 ct diamonds, H/VS1, excellent 17 cut

**Earrings:** 14K yellow gold | 3.5 g | 0.06 ct diamonds, H/VS1, excellent 17 cut



## WHITE GOLD GRACE SET

Sinuous, sensual, and seductive, curves exude a feminine grace and sophistication like no other. The fluidity of this white gold pendant and earring set inspires a sense of charm, backed by an invincible spirit perfect for a woman who meets every day head-on with a quiet confidence that never waivers.

**Pendant:** 14K white gold | 0.9 g | 0.04 ct diamonds, H/VS1, excellent 17 cut

**Earrings:** 14K white gold | 2.2 g | 0.09 ct diamonds, H/VS1, excellent 17 cut

# brook & blaze<sup>®</sup>

As a purveyor of high-quality, affordable jewellery pieces, Brook & Blaze are known for creating fun and dramatic designs that highlight the strength and versatility of self-expression.

Drawing its name from the clear waters of a babbling brook juxtaposed against the blazing passion of fire, Brook & Blaze is a force of nature; a brand that harnesses the power of its elemental namesakes to guide the design of memorable, handcrafted jewellery.

## FIONA SET

Stand out from the crowd with this whimsical set of fuchsia and erinite statement pieces.

**Necklace:** Brass with fuchsia cubic zirconias | 18K gold plating plus electronic coating | Length: 435 mm + 70 mm extender chain with cubic zirconia

**Earrings:** Brass with fuchsia cubic zirconias | 18K gold plating plus electronic coating | Length: 28 mm

**Bracelet:** Brass with fuchsia and erinite cubic zirconias | 18K gold plating plus electronic coating | Length: 175 mm + 70 mm extender chain with cubic zirconia



## MAIRA SET

Find the happiness inherent in dressing up and looking fabulous with this cute collection of jewellery pieces that boast sapphire-like cubic zirconias in cornflower blue and crystal.

- Necklace:** Brass with cornflower blue sapphire cubic zirconias |  
Silver 925 plus electronic coating | U-shape casting part |  
Width & length: 118 x 76 mm |  
Chain length: 195 mm + 70 mm extender chain with cubic zirconia
- Ring:** Cornflower blue sapphire and crystal cubic zirconias with brass |  
Silver 925 plus electronic coating |  
Inner diameter: 17 mm (adjustable)
- Earrings:** Cornflower blue sapphire cubic zirconias with brass |  
Silver 925 plus electronic coating |  
Length: 95 mm
- Bracelet:** Brass with cornflower blue sapphire and crystal cubic zirconia |  
Silver 925 plus electronic coating |  
Length: 175 mm + 70 mm extender chain with cubic zirconia







## ANITA SET

Become the queen of glamour with this set of majestic jewellery pieces, with light sapphire blue and amethyst cubic zirconias that mimic the dazzle of precious gemstones.

**Necklace:** Brass with light sapphire blue cubic zirconias | 18K gold plating plus electronic coating |  
Length: 410 mm + 70 mm extender chain with cubic zirconia

**Ring:** Amethyst and light sapphire blue cubic zirconias with brass | 18K gold plating plus electronic coating |  
Inner diameter: 17 mm (adjustable)

**Earrings:** Light sapphire blue cubic zirconias with brass | 18K gold plating plus electronic coating | Width & length: 9 x 9 mm

**Bracelet:** Brass with amethyst and light sapphire blue cubic zirconias | 18K gold plating plus electronic coating |  
Width & length: 60 x 50 mm



## EMERY SET

A set of fancy finery featuring gorgeous synthetic stones for a truly mesmerising look.

**Necklace:** Brass with chrysolite and erinite cubic zirconias | 18K gold plating plus electronic coating |  
Length: 435 mm + 70 mm extender chain with cubic zirconias

**Ring:** Chrysolite and erinite cubic zirconias with brass | 18K gold plating plus electronic coating |  
Inner diameter: 17 mm (adjustable)

**Earrings:** Chrysolite and erinite cubic zirconias with brass | 18K gold plating plus electronic coating |  
Width & length: 5.5 x 10 mm

**Bracelet:** Brass with chrysolite, erinite, and crystal cubic zirconias | 18K gold plating plus electronic coating |  
Length: 175 mm + 70 mm extender chain with cubic zirconias

